

Rapid flood inundation mapping using social media, remote sensing and topographic data

J. F. Rosser¹ · D. G. Leibovici¹ · M. J. Jackson¹

Received: 11 August 2016 / Accepted: 11 January 2017 / Published online: 25 January 2017
© The Author(s) 2017. This article is published with open access at Springerlink.com

Abstract Flood events cause substantial damage to urban and rural areas. Monitoring water extent during large-scale flooding is crucial in order to identify the area affected and to evaluate damage. During such events, spatial assessments of floodwater may be derived from satellite or airborne sensing platforms. Meanwhile, an increasing availability of smartphones is leading to documentation of flood events directly by individuals, with information shared in real-time using social media. Topographic data, which can be used to determine where floodwater can accumulate, are now often available from national mapping or governmental repositories. In this work, we present and evaluate a method for rapidly estimating flood inundation extent based on a model that fuses remote sensing, social media and topographic data sources. Using geotagged photographs sourced from social media, optical remote sensing and high-resolution terrain mapping, we develop a Bayesian statistical model to estimate the probability of flood inundation through weights-of-evidence analysis. Our experiments were conducted using data collected during the 2014 UK flood event and focus on the Oxford city and surrounding areas. Using the proposed technique, predictions of inundation were evaluated against ground-truth flood extent. The results report on the quantitative accuracy of the multisource mapping process, which obtained area under receiver operating curve values of 0.95 and 0.93 for model fitting and testing, respectively.

Keywords Flood mapping · Data fusion · Data conflation · Data integration

1 Introduction

Flooding causes considerable damage to people, infrastructure and economies of many countries of the world. During a flooding event, rapid estimation of inundated areas is critical to effectively manage response operations. Emergency managers require timely and

✉ J. F. Rosser
julian.rosser@nottingham.ac.uk

¹ Nottingham Geospatial Institute, University of Nottingham, Nottingham NG7 2TU, UK

accurate information on areas affected by floodwater to prioritise relief efforts and plan mitigation measures against damage.

Nowadays, large amounts of geospatial data can be derived from a multitude of sources. In a time-critical disaster situation, utilisation of multiple data sources is particularly desirable. Remote sensing from satellite and aircraft platforms can provide detailed snapshots of a situation. However, these frequently do not provide the spatio-temporal coverage required for flood assessment and may not be validated in the field. For example, Landsat 8 provides multispectral data at 30-m spatial resolution, yet urban and semi-urban environments can contain many features affecting floodwater movement and presence within this cell size. Remote assessments can also have quality and uncertainty issues resulting from the choice of processing algorithm, mixed spectral responses and background noise (Jiang et al. 2014).

Furthermore, the increasing proliferation of consumer devices, such as smartphones, tablets and wearable logging sensors is facilitating the creation of large streams of data (Goodchild 2007). However, despite much interest in using such sources in natural hazard assessment (Goodchild and Glennon 2010), exploiting this information is not trivial. The data usually have no validation or assessment of quality (Goodchild and Li 2012) and may contain deliberate or unintended bias (Xiao et al. 2015).

To address these issues, we describe a method to integrate information derived from multiple sources to aid in the estimation of flood inundation extent. Observations made by in situ crowd users are combined with medium-scale optical remote sensing and a high-resolution terrain model. Our main contribution is a probabilistic model, which quantitatively evaluates the contribution of each data source, and exploits contemporaneous remote sensing, social media and high-resolution topographic models to estimate flood inundation extent. Although our sample of social media is relatively small ($n = 205$), the importance of this information can be quantified by our method and use this ranking within an overall flood presence probability prediction. This enables even relatively small amounts of crowdsourced information to add value to hazard assessments. Validation and assessment of the proposed fusion-conflation model is undertaken demonstrating quantitative improvements over mapping flood extent using a single data source.

2 Crowdsourcing and disaster assessment

In this section, we review approaches and research undertaken to exploit crowdsourced data during natural disasters. We separate this work into two separate areas. Section 2.1 deals with citizen science type approaches where the “crowd” is actively engaged or directed. Section 2.2 reviews studies using web-harvested geospatial data.

2.1 Volunteer-based assessment

The use of crowdsourced data has been explored in various papers and research programmes in relation to natural disaster assessment. Coordinated deployment of crowd contributors is relatively well explored following earthquakes (Zook et al. 2010; Barrington et al. 2011; Ghosh et al. 2011; Kerle and Hoffman 2013). These approaches typically rely on citizen-based satellite or aerial image interpretation to assess disaster damage. Crowdsourcing software platforms may also be used to assess ground-collected images captured using smartphones. For example, the UNITAR-UNOSAT project

GeoTag-X aims at using volunteers to categorise images captured during disaster situations and providing assessments, such as floodwater extent, damage to buildings or the safety of temporary shelters for refugees (GeoTag-X 2015).

Poser and Dransch (2010) evaluated the use of volunteered geographic information for flood damage assessment. The authors surveyed individuals affected by a river flooding event to understand their perception of inundation and compared this to hydraulic modelling predictions, identifying that non-professionals can make useful assessments of water extent and depth.

Hung et al. (2016) describe the use of geo-referenced citizen reports in relation to flood events. They describe a method to assess the credibility of the reports based on a probabilistic model trained on a previous flood event. The model was then used to categorise credibility on a subsequent event, highlighting that volunteered information may be automatically ranked to enable more rapid adoption within emergency management contexts.

Le Coz et al. (2016) highlight the use of volunteer-based hydrological monitoring and prediction. They describe the adoption of citizen-captured video footage to estimate hydraulic data (e.g. water velocity and discharge) in flash flooding situations. Furthermore, the authors describe development and deployment of an interpolation approach using citizen's photographs of maximum flood levels in conjunction with LiDAR surface models, and supplementary field assessment by professionals, in order to generate water depth maps.

In our work, we choose to investigate use of social media data as that follows events in real time, enabling capture of unpredictable situations and with the potential of a large sample of well-positioned data. For these reasons, we focus the remaining review of the literature on this topic.

2.2 Social media

Using information from social media for aiding decision-making is a problematic task. This is due to multiple reasons including the challenge of extracting relevant information (e.g. identifying topicality) within unstructured or semi-structured web-harvested data, unknown quality (there may be little or no relevant metadata), and difficulty integrating it with other sources (which may in turn have their own issues of quality and uncertainty). When using social media, biases may also be present, for example, from a lack of digital engagement within certain demographics of the populations of particular areas (Xiao et al. 2015).

Panteras et al. (2014) cross-reference geotagged points of images mined from Flickr and tweets to estimate spatial footprints events. The authors extract toponyms expressed in tweets to aid in estimating the viewing direction of Flickr images depicting a wildfire event, leading to a more accurate delineation of the event. However, the authors do not utilise remotely sensed earth observation data within their methodology, which is often available in disaster situations.

Several research projects have analysed social media specifically during flood disasters. Albuquerque et al. (2015) provide an example of the use of social media during flood events. They built a statistical model of tweets as they relate to authoritative river levels. In particular, the model tested the association between tweet locations and the water level in flood-affected catchments.

Schnebele et al. (2014b) describe an interpolation-based approach that incorporates non-authoritative data such as geotagged airborne (oblique) photographs and terrestrial videos

to provide a spatio-temporal flood damage assessment. Furthermore, integrating social media data with remote sensing, river gauge measurements and digital elevation models (DEM) has been shown to be effective at producing near-real-time flood hazard maps (Schnebele and Cervone 2013). Fusion-based approaches can also aid extent estimation when the data sources have incomplete coverage (Schnebele et al. 2014a). However, these approaches rely on subjective user determination of weights for the model variables.

3 Study area

From December 2013 to February 2014, many parts of the UK were affected by flooding. These events resulted from a series of major storms generating intense rainfall, severe coastal gales and exceptional river flow rates (Slingo et al. 2014). Furthermore, a lack of investment in river dredging, flood defence schemes, intensive agricultural practice and inappropriate development of floodplains are thought to have exacerbated levels of flooding (Thorne 2014). The impact of the inundation was sufficient to invoke activation of the International Charter (International Charter 2000), a mechanism for making satellite data available for disaster response, on 4/12/13, 6/1/14 and 6/2/14.

The study area is centred on the city of Oxford, shown in Fig. 1. The area encompasses 154.35 km². Multiple watercourses flow through and converge in the city and its surroundings. The Thames (Isis) and Cherwell form the major river systems with many smaller streams and brooks as tributaries. The landscape is predominantly made up of urban and agricultural uses with small tracts of mixed forest cover. Oxford city is thought to be primarily at risk of fluvial flood events (OCC 2011). Groundwater flooding is also known to be a risk factor (OCC 2011; Macdonald et al. 2012). In the city, 4500 properties

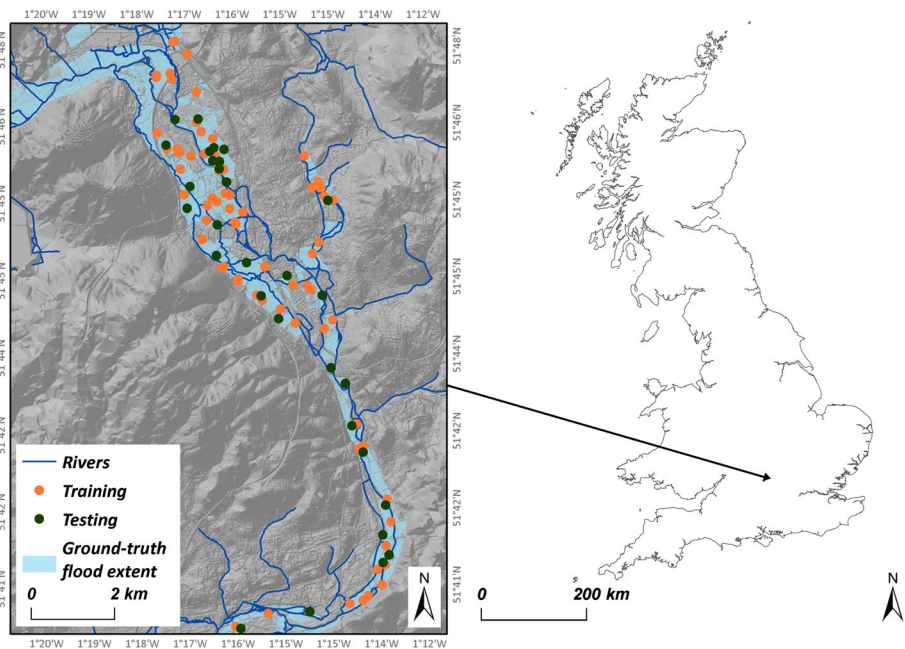


Fig. 1 Study area location within Great Britain, ground-truth flood extent, training and testing points

are thought to be at risk of flooding, rising to 6000 properties by 2080 as a result of the effects of climate change (Environment Agency 2015).

4 Methodology

The main processing steps designed for estimating and integrating evidence regarding flood extent are illustrated in Fig. 2. The methodology describes integration of near-real-time Landsat 8 imagery and geotagged photographs from Flickr, together with ancillary topographic data (derived from a LIDAR DTM). These datasets are processed and classified (see Sects. 4.1, 4.2 and 4.3), and the results are then integrated using the fusion model (see Sect. 4.4).

Figure 3 shows a 1-month period detailing the acquisition times for the different data sources used. The period details the number of geotagged images captured each day and the Landsat 8 acquisition date (7 January). The figure also shows the river level for a gauge station (Kings Mill) close to the centre of the city of Oxford, which notably reaches a maximum height on the day of the Landsat 8 overpass. As discussed below, our experiments focus on the 7-day period delineated by the shaded area (5 Jan 2014–11 Jan 2014).

4.1 Crowdsourced flood extent estimation

In this work, the photograph-sharing site Flickr was used as a source of volunteered photographs. Flickr data were retrieved through the public API. For this study, the query was restricted to geotagged imagery falling within the study area and time frame (5 Jan 2014–11 Jan 2014). Flickr has fields for title, description and tags—each of which may contain information regarding the image content. Therefore, the keyword “flood” was used to detect relevant records across any of these fields (this term functions as a wildcard, detecting words as, for example, “flooding”, “floods”). This retrieved a total of 205 images taken by 25 different users. Figure 4 (left) shows the distribution of image locations across the study area.

Several issues regarding the quality of information are present when using geotagged web-harvested images. To further analyse the sample, the exchangeable image file (EXIF) metadata associated with each image were retrieved. The EXIF provides metadata regarding each individual image which includes information populated by the camera sensor or device used for capture. This includes potentially valuable geographic data such as the direction the device was facing during capture (GPSImageDirection). However, as noted in previous work, such as Panteras et al. (2014), these EXIF tags are not often

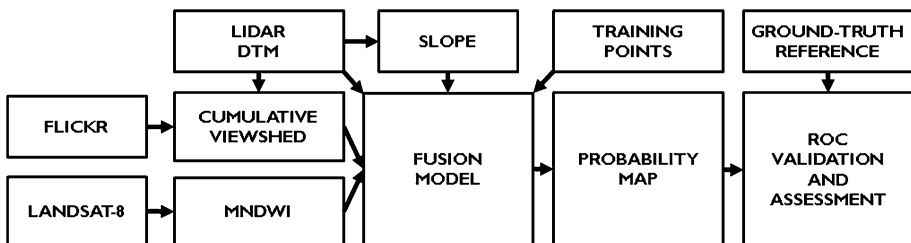


Fig. 2 Processing methodology illustrating data sources, analytical steps and validation

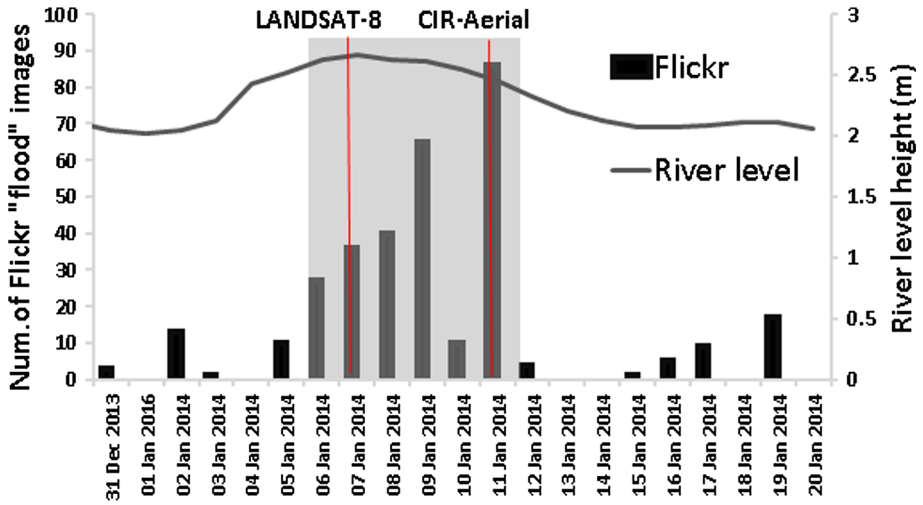


Fig. 3 Data sources and availability including number of geotagged images (Flickr), Landsat-8 acquisition time, CIR aerial photograph (used for ground-truth) acquisition time and river level height (at the Kings Mill gauge). The shaded area corresponds to the experimental time frame for data analysis

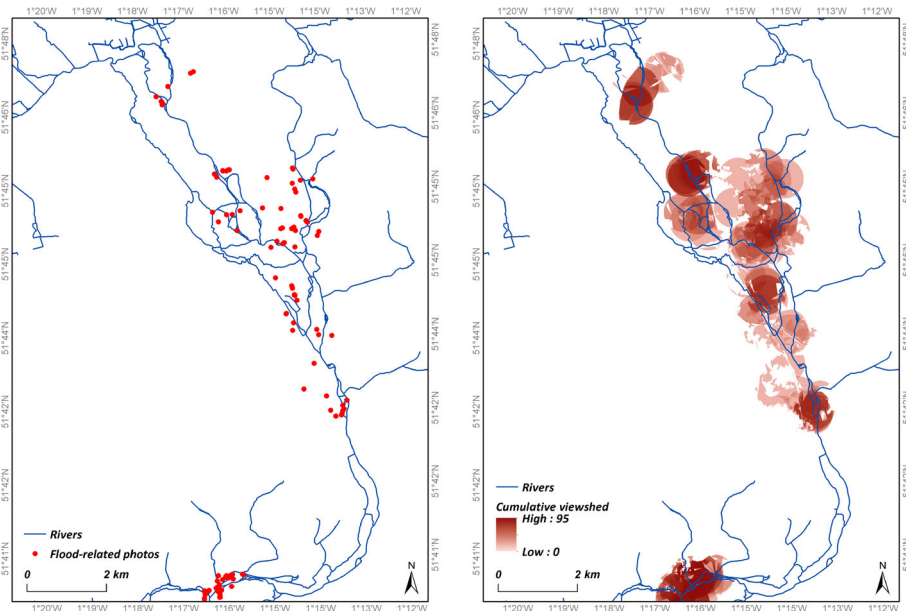


Fig. 4 Geotagged Flickr locations (left) and cumulative viewshed analysis (right)

populated. For the sample of 205 geotagged images that were collected, only 4 were found to contain EXIF data specifying the image direction.

To address the lack of metadata and derive a 2D representation of flood extent, an appropriate strategy for modelling these images is required. An analysis of the spatial point pattern of geotagged positions can be undertaken using kernel density estimation (KDE), as

adopted in Schnebele and Cervone (2013). These unsupervised methods learn a probabilistic surface based on the 2D point pattern. Rather than use a kernel-based method, we take a similar approach to Panteras et al. (2014) and adopt a viewshed-based model. Specifically, the cumulative viewshed is used, first adopted for archaeological analysis (Wheatley 1995). Here a viewshed for each photograph is calculated with each pixel labelled as visible (value = 1) or not visible (value = 0). A summation over all viewsheds therefore gives the number of times a location is visible from any photograph. This avoids the necessity of selecting a bandwidth parameter, as required by kernel density estimation, and takes account of topography—an important consideration in flood scenarios. The viewshed methodology provides a measure of corroboration between individual geotagged photographs at the pixel level and thus provides a model of agreement on where possible flooded areas may be. The viewshed methodology implemented here assumes a viewer height of 1.6 m, 360° viewing angle and a maximum viewing distance of 500 m. Although the focal length of the camera image might be utilised, this information was not present in the EXIF data. Thus, we chose a maximum viewing distance of 500 m based upon the range that would be effectively observable (e.g. a photograph taken at edge of a flooded field could extend to this range). The LIDAR DTM (described in further detail below) is used by viewshed algorithm for defining topography. The result of the cumulative viewshed analysis is shown in Fig. 4 (right).

4.2 Landsat 8 water detection

Both multispectral and SAR satellite remote sensing is commonly used for assessing inundation extent during flood events. The operational land imager (OLI) instrument of Landsat 8 provides multispectral data at 30-m spatial resolution. A single Landsat 8-OLI image was obtained from the US Geological Survey (USGS) Global Visualization Viewer as Level 1 Terrain Correct (L1T) product. One scene acquired on 7th January 2014 (path/row: 203, 24) was obtained with cloud-free coverage of the study area. A small section in the south-eastern corner of the study area fell outside the acquisition swath and thus is missing data. Digital number (DN) values for the scene were converted to surface reflectance (see Fig. 5, left) using the dark object subtraction (DOS) method (Chavez Jr 1996) available in QGIS. Further data pre-processing steps undertaken here involved stacking Landsat bands 1–7 (30 m), re-projecting to British National Grid, cropping to the study area undertaken using GDAL.

One frequently applied approach for detecting water given spectral response at appropriate infrared wavelengths is to compute the Normalised Difference Water Index (NDWI) (McFeeters 1996). However, using the Modified NDWI (MNDWI) has the advantage of suppressing the response of both vegetation and built-up areas leading to enhanced water detection for these areas (Xu 2006). This is applicable to the landscape found in the Oxford study area and as such, we adopt this method here (see Fig. 5, right). MNDWI can be expressed as:

$$\text{MNDWI} = \frac{\text{Green} - \text{MIR}}{\text{Green} + \text{MIR}} \quad (1)$$

where MIR corresponds to band 7 (SWIR2, 2.11–2.29 μ) of the L8-OLI instrument. As an index method, a threshold for discriminating between water and non-water areas is required. The threshold value for identifying areas of water can be assessed by expert or automatically determined using methods such as Otsu's algorithm (Otsu 1979). The method uses the maximum between-class variance to determine the threshold. For further

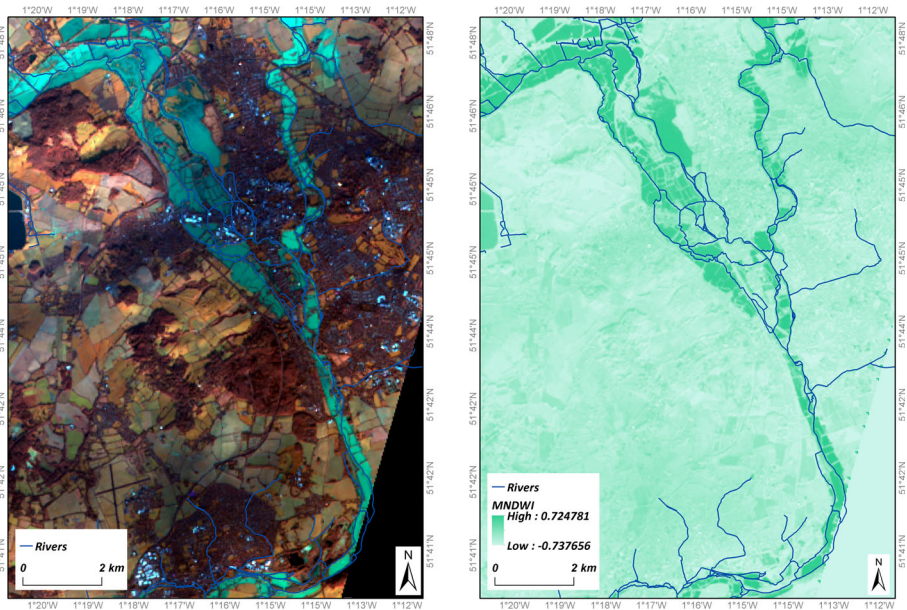


Fig. 5 False colour composite (RGB = 632) Landsat-8 reflectance (*left*) and Modified Normalised Difference Water Index (MNDWI, *right*)

information, a detailed discussion of using Otsu's method for delineating water features is in Li et al. (2013).

4.3 Topographic flood factors

The topography of an area can greatly affect the flow and accumulation of floodwater. In general, the use of ancillary topographic data for aiding flood monitoring is widely applied for aiding land and flood mapping procedures. For example, Pierdicca et al. (2008) developed a method for estimating flooded areas from SAR with additional data from DEM and land cover mapping.

Here we build a digital terrain model (DTM) from elevation data sourced from both the UK Government Environment Agency and National Mapping Agency of Great Britain (Ordnance Survey). Environment Agency LIDAR DTM tiles at 2-m spatial resolution covering the study area were collated (Environment Agency 2015). As the LIDAR data did not cover the edges of the study area, Ordnance Survey Terrain 5 grid tiles were also acquired providing DTM data at a 5-m spatial resolution. These sources were merged and resampled using cubic convolution resampling to form a single elevation model at 5-m spatial resolution (see Fig. 6, right). The slope variable was calculated from the DTM using the GDAL (GDAL 2016) slope function (see Fig. 6, left).

4.4 Data fusion

A dataset for training and testing the statistical model, described in detail below, was obtained using a randomly distributed sample of 120 points drawn from a ground-truth inundation extent of 11th January 2014. The ground-truth flood inundation was created by

digitisation of the extent according to a visual interpretation of colour infrared (CIR) aerial imagery undertaken by experts in the Environment Agency Geomatics group. This sample was partitioned into sets of 100 and 20 points for training and testing, respectively (Pradhan et al. 2010; Tehrany et al. 2014b). See Fig. 1 for the locations of training and testing points.

4.4.1 Weights of evidence

A Bayesian probabilistic method is adopted to establish the relation between the evidence variables. Weights-of-evidence (WoE) analysis first gained widespread usage within the geosciences community for geological prospecting. The method has since been widely used for analysis of natural hazards including landslides (Regmi et al. 2010; Sterlacchini et al. 2011) and flood susceptibility (Tehrany et al. 2014b). Bonham-Carter (1994) provides detailed description of WoE, the main parts of which are described here.

The weight terms are calculated as

$$W_i^+ = \ln \frac{P\{B|A\}}{P\{B|\bar{A}\}} \tag{2}$$

$$W_i^- = \ln \frac{P\{\bar{B}|A\}}{P\{\bar{B}|\bar{A}\}} \tag{3}$$

where W_i^+ and W_i^- denote the positive and negative weights for evidence B . The terms $P\{B|A\}/P\{B|\bar{A}\}$ and $P\{\bar{B}|A\}/P\{\bar{B}|\bar{A}\}$ denote, respectively, the *sufficiency* and *necessity* ratios (also known as likelihood ratios) respectively. These are calculated from

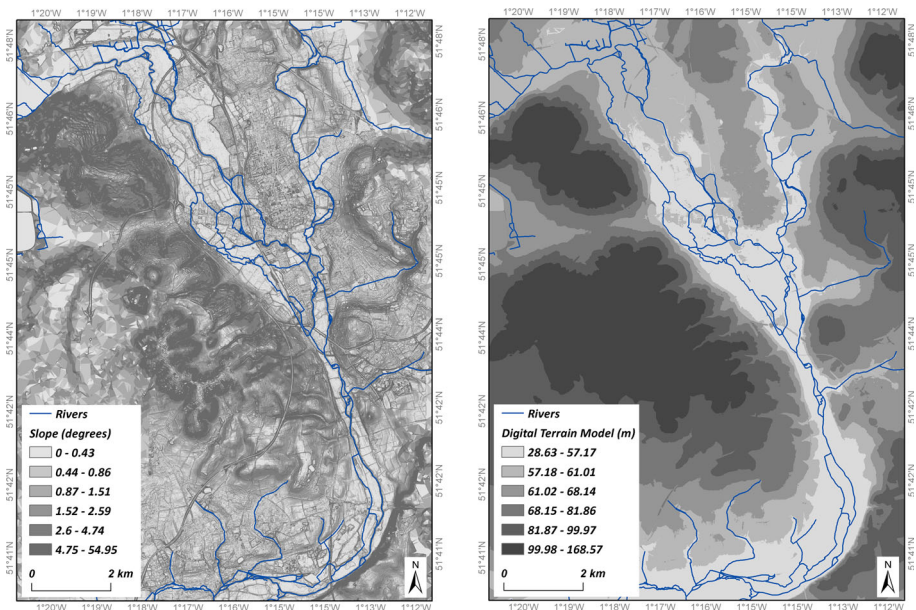


Fig. 6 Topographic variables of slope (left) and elevation (right)

$$P\{B|A\} = \frac{N\{B \cap A\}}{N\{A\}} \tag{4}$$

$$P\{B|\bar{A}\} = \frac{N\{B \cap \bar{A}\}}{N\{\bar{A}\}} \tag{5}$$

$$P\{\bar{B}|A\} = \frac{N\{\bar{B} \cap A\}}{N\{A\}} \tag{6}$$

$$P\{\bar{B}|\bar{A}\} = \frac{N\{\bar{B} \cap \bar{A}\}}{N\{\bar{A}\}} \tag{7}$$

where A denotes the area of known occurrences of the phenomena based on the training sample, B denotes the area of an evidence variable, and $N\{\}$ denotes the count of the grid cells. Intuitively, within this work, these equations calculate proportions for the presence and absence of flood given presence and absence of the binary evidence.

In WoE, continuous variables must be discretised to form multiclass evidence data. Once weights for the evidence data have been calculated, the maps may be integrated together. The standard approach to applying WoE is to then convert multiclass evidence to binary evidence variables. While an index of susceptibility can be calculated based on a summation of contrast C (Oh and Lee 2010; Regmi et al. 2010), a map of posterior probability may be calculated through identification of the appropriate cut-off value determined from an analysis of contrast C (Bonham-Carter 1994). The ratio of the contrast to standard deviation, $C/s(C)$, provides a statistical test for determination of the optimal cut-off point for each variable. Specifically, the threshold can be determined as the point where $C/s(C)$ is greater than or equal to a defined confidence level. The two final weights for this binary map are assigned from the $W+$ and $W-$ values at this threshold point.

Assuming conditional independence between evidence variables (i.e. $P(B_1B_2|A) = P(B_1|A)P(B_2|A)$), logarithmic posterior probability maps may be computed using

$$L = \text{logit}\{A|B_1 \cap B_2 \cap B_3 \cap \dots \cap B_n\} = \text{logit}\{A\} + \sum_{i=1}^n W_i \tag{8}$$

where $\text{logit}\{A\}$ denotes the prior logarithmic odds of a flooded location given its prior probability $P(A)$. Therefore

$$\text{logit}\{A\} = \log(P(A)/1 - P(A)) \tag{9}$$

The prior probability $p(A)$ can be calculated as the proportion of known flood locations to the study area.

$$P(B) = N\{A\}/N\{T\} \tag{10}$$

where $N\{T\}$ is the total area.

Weight W_i corresponds to either W_i^+ or W_i^- based on the presence or absence of the evidence, respectively. Then converting to a probability

$$P_{\text{flood}} = \frac{\exp(L)}{(1 + \exp(L))} \tag{11}$$

where P_{flood} is the probability of a flooded location.

Computing posterior probability maps using weights of evidence requires an assumption of conditional independence between evidence variables. In geospatial problems, this assumption may be violated to some degree as spatial data can often exhibit correlations and therefore examination of the conditional independence should be undertaken (Bonham-Carter 1994; Agterberg and Cheng 2002)

For discretisation in this work, a six-class quantile reclassification scheme was applied to variables with continuous values, i.e. Flickr cumulative viewshed, slope and elevation variables. Quantile classification was chosen due to its previous application to hazard mapping using evidence variables (Dickson et al. 2006; Tehrany et al. 2014b). As binary evidence, the MNDWI variable does not require reclassification.

5 Results

In this section, we present experimental results of applying the proposed workflow for estimating flood extent. First, we analyse the calculated weight and contrast values which quantify positive and negative correlations with flooded locations provided by each individual data source (Sect. 5.1). Secondly, evaluation of the predictive power of the individual data sources and their integration together as a posterior probability model is made against ground-truth flood extent data (Sect. 5.2). Thirdly, we generate a flood extent map based on the posterior probability (Sect. 5.3).

5.1 Evidence weights

Table 1 details the weight calculations ($W+$, $W-$) for each evidence variable class. Figure 7 plots the weight contrast (C) for each of the multiclass data sources. Recall from Sect. 4.4.1 that the contrast can be used to help assess the importance of each class and determine a binary cut-off threshold for the influence of a variable.

As described in Sect. 4.4.1, the cumulative viewshed Flickr extent was classified using quantiles (Viewshed-01 to Viewshed-06). In Table 1 and Fig. 7 (left), the influence ($W+$) and weight contrast (C) of the viewshed extent remain negative for the first three classes (Viewshed-01 to Viewshed-03), with a strong positive correlation for classes 4–6 (Viewshed-04 to Viewshed-06). This corresponds to what we would expect given an overestimation of flooded extent provided by the viewshed methodology described in Sect. 4.1. However, classes 4–6 relate to areas where the viewshed extent is corroborated by multiple images, correlating with flooded locations and lead to an increased positive weight (weight values of 1.72, 1.60, and 1.54).

Notably, the weight values for the Flickr cumulative viewshed are close to that found in Landsat-8 MNDWI water detection class, which has a strong positive weight ($W+$) of 2.11. Recall from Sect. 4.2 that the water detection is based on a binary threshold derived using the Otsu method, a commonly used method for detecting flood presence. Given this, we can expect this detection to be influential in detecting flood presence.

The results also demonstrate correlations of topographic evidence variables with flood locations. As seen in Table 1, lower elevations exhibited a high positive correlation with flood locations, ranging from 1.42 to 0 for positive weight values ($W+$). The positive weight value for the slope variable is seen to provide a slightly weaker correlation ranging from 0.63 to 0.0 for gentle to steep slopes respectively. As discussed in Sect. 4, analysis of the contrast (C) and $C/s(C)$ values enables determination of an appropriate cut-off to

Table 1 Results of initial weight calculation ($W+$, $W-$), contrast (C), standard deviation of contrast ($s(C)$), studentised contrast ($C/s(C)$), final weight selected (W_{fin}) and its standard deviation ($s(W_{fin})$) for evidence layers

Evidence variable class	Number of cells	$W+$	$W-$	C	$s(C)$	$C/s(C)$	W_{fin}	$s(W_{fin})$
<i>Flickr cumulative viewshed</i>								
Viewshed01	5,598,238	-0.23	1.10	-1.33	0.22	-5.97	-0.23	0.12
Viewshed02	160,302	-0.26	0.01	-0.27	0.71	-0.37	-0.15	0.50
Viewshed03	126,383	-0.02	0.00	-0.02	0.71	-0.03	-0.15	0.50
Viewshed04	110,037	1.72	-0.09	1.81	0.33	5.44	1.72	0.32
Viewshed05	99,895	1.60	-0.07	1.67	0.37	4.52	1.60	0.35
Viewshed06	79,145	1.54	-0.05	1.59	0.42	3.78	1.54	0.41
<i>Lansat-8 Modified Normalised Difference Water Index</i>								
MNDWI Non-water	5,306,975	-1.57	2.11	-3.68	-14.08	-14.08	-1.57	0.24
MNDWI Water	579,843	2.11	-1.57	3.68	14.08	14.08	2.11	0.11
MNDWI (MD)	287,182	0.00	0.00	0.00	0.00	0.00	0.00	0.00
<i>Topographic data—slope</i>								
Slope 0°–0.43°	2,331,865	0.63	-0.76	1.39	0.22	6.33	0.37	0.10
Slope 0.44°–0.86°	3,887,775	0.37	-1.41	1.78	0.35	5.10	0.37	0.10
Slope 0.87°–1.51°	4,646,052	0.21	-1.26	1.47	0.39	3.76	-1.41	0.33
Slope 1.52°–2.59°	5,414,922	0.10	-1.41	1.51	0.59	2.58	-1.41	0.33
Slope 2.6°–4.74°	5,902,486	0.03	-1.48	1.52	1.01	1.51	-1.41	0.33
Slope 4.75°–54.95°	6,174,000	0.00	11.03	-11.03	14.14	-0.78	-1.41	0.33
<i>Topographic data—elevation</i>								
Elevation 28.63–56.07 m	1,226,214	1.42	-1.49	2.91	0.22	11.19	1.00	0.10
Elevation 56.08–58.81 m	2,252,396	1.00	-4.15	5.15	5.12	5.12	1.00	0.10
Elevation 58.82–63.75 m	3,317,417	0.62	-8.44	9.06	0.91	0.91	-4.15	1.00
Elevation 63.76–73.63 m	4,288,052	0.36	-8.02	8.39	0.84	0.84	-4.15	1.00
Elevation 73.64–92.84 m	5,267,575	0.16	-7.29	7.45	0.75	0.75	-4.15	1.00
Elevation 92.85–168.57 m	6,174,000	0.00	11.03	-11.03	-0.78	-0.78	-4.15	1.00

M.D missing data

determine the final evidence variable class weight (visual assessment of Fig. 7 (centre) and Fig. 7 (right) does not show a clear distinction for this cut-off). Here, a value of 2 is chosen for the confidence level (Bonham-Carter 1994). This calculation forms a Studentised measure of the certainty with which the contrast is known—i.e. a large value indicates an effect that is more likely to be real. Slope values covering values of 0°–0.86° and elevation covering altitudes of 28.63–58.81 m defined this threshold, and the final evidence weight W_{fin} , shown in Table 1.

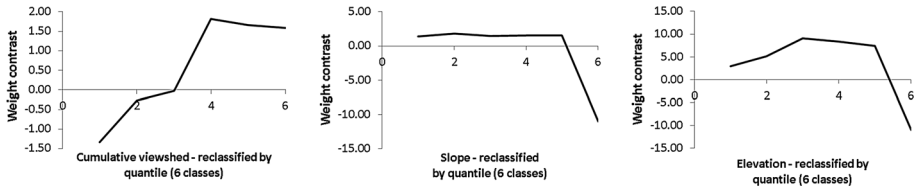


Fig. 7 Weight contrast (*C*) curves for classified continuous evidence variables. Cumulative viewshed (*left*), slope (*centre*), elevation (*right*)

5.2 Model testing and validation

Receiver operating characteristic (ROC) and area under curve ROC (AUROC) analysis was used to assess the performance of the individual data sources derived from Landsat-8 MNDWI and Flickr analysis, and the posterior probability model generated from combining all sources using weights of evidence. In brief, ROC assessments are typically used to measure the predictive power of a model to detect a binary outcome and are often used for validating susceptibility models and mapping tasks (such as Devkota et al. (2013) and Tehrany et al. (2014a)). The ROC curve plots the false positive rate (1-specificity) against the true positive rate (sensitivity). The sensitivity and specificity provide an evaluation of the model at correctly identifying flooded locations (true positive rate) and non-flooded locations (true negative rate).

Here, ROC is used to assess both model fitting (Fig. 8a) and predictive power (Fig. 8b). The cumulative viewshed computed from geotagged Flickr imagery shows results of 0.6 and 0.55 for model fitting and testing, respectively. These results indicate that these data exhibit relatively poor sensitivity and specificity. This is partly to be expected as the assumption of a 360° viewing angle for each image in the viewshed calculation results in a maximum spatial extent, and this increases false positives in flood presence. Furthermore, the ROC model results are based on a relatively small split of randomly spatially distributed test data (20 points) which directly influence the results.

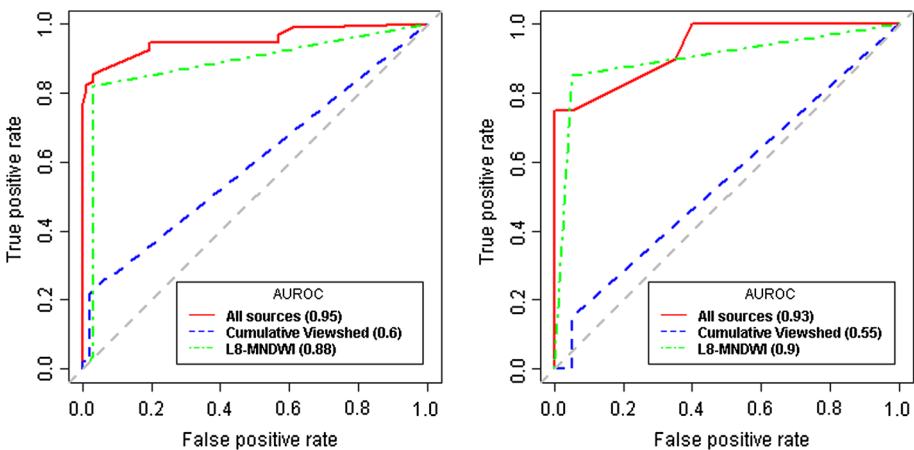


Fig. 8 ROC curves for model training (*left*) and model testing (*right*). All sources include all data integrated as posterior probability, L8-MNDWI is the binary extent produced from the Otsu threshold of Landsat-8, and cumulative viewshed is derived from the Flickr photographs (as seen in Fig. 4, right)

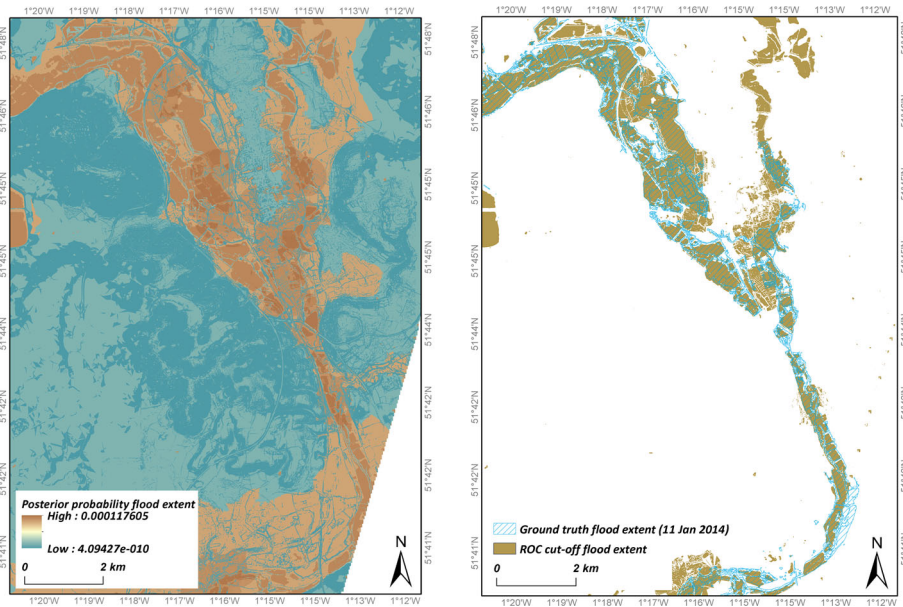


Fig. 9 Flood extent maps based on posterior probability (*left*) and probability cut-off calculated using ROC analysis

ROC analysis of the Landsat-8 MNDWI binary flood mapping based on the Otsu threshold was also completed. This identified a model fitting error of 0.88 and testing error of 0.90 indicating that this data source is very effective at delineating flooded areas.

Generation of the all sources (L8-MNDWI, Flickr cumulative viewshed and topographic variables) flood model was undertaken through calculation of posterior of probability, as specified by Eqs. 8–11. The validation of the posterior probability map shows AUROC values of 0.95 and 0.93 for model fitting and testing, respectively.

Testing of the resulting probability map incorporating all data sources was carried out indicating no significant violations of conditional independence. A conditional independence ratio of 6.38 was calculated, well above the recommended upper threshold of 1 suggested by Bonham-Carter (1994).

5.3 Flood extent map generation

Using a cut-off point determined from the ROC analysis of the training data, binary flood extent maps may be generated from the probabilistic flood map. The cut-off point that equally maximised both sensitivity and specificity was chosen using the ROCR package (Sing et al. 2005). Figure 9 (right) shows the binary extent flood map against the CIR ground-truth extent.

6 Discussion

The results demonstrate that incorporation of multiple sources of data can aid prediction of flood extents using the proposed methodology. Despite this, several important assumptions must be noted. Firstly, this work does not consider temporal aspects of the data within the

modelling process as this case study involved a prolonged flooding event. Consideration of the temporal aspects would be important for generalising the work to flash flood mapping scenarios. Secondly, one drawback of the weights-of-evidence approach is the need for variable discretisation. This can result in information loss if sufficient consideration is not given to the modelling problem and evidence data used. This means that the proposed methodology cannot be applied in a completely automated fashion unless an automatic choice of number of classes is performed.

The work described here exploited a data-driven fusion model to integrate variables which inform the desired analytical output—in this case a map of flood extent. However, in other disaster scenarios alternative outputs might be more valuable. For example, identification of the areas where there is high uncertainty might be useful, allowing for further remote interrogation or field investigation. The weights-of-evidence approach supports this through enabling analysis of the weight variance (Dickson et al. 2006). Extension of the analysis of either the weights or uncertainty with ensemble learning methods also offers the potential of improving the results.

Although the experiments here exploit geotagged images sourced from social media, the rapid inundation mapping methodology employed could incorporate other crowdsourced assessments such as Twitter (Panteras et al. 2014; Smith et al. 2015) or volunteered by citizens (Poser et al. 2009). Similarly, other authoritative data sources may be relevant depending on the context. Within the UK, for example, many large watercourses are gauged. Where this is the case, both river flow measurements and river level data are usually available and this might be incorporated through linear interpolation of depth levels as an indication of maximal water extent (Apel et al. 2009) or inclusion of an appropriate 2D hydrological inundation model (Liu et al. 2015). Other remote sensing platforms may also be utilised as independent sources of evidence, such as SAR (Mason et al. 2010; Matgen et al. 2011; Schumann et al. 2013).

Data quality is often discussed in relation to use of crowdsourced information. In terms of rapid inundation mapping, the data sources expose different levels of uncertainty. On one side with authoritative data, this uncertainty comes from a controlled quality assurance but which needs to be modified due to the assessment time difference. On the other side, various crowdsourcing data (e.g. Flickr, citizen science, Twitter) come with less controlled quality assurance, but are timely. This reflects a recognised issue in the use of volunteered data for natural hazard assessment where data quality is a concern, but its adoption is particularly desirable (Goodchild and Glennon 2010; Haworth 2016). Our work evaluated a sample of social media data taken for a large and serious flooding event retrieved via keyword search. Despite this, the small size of the retrieved social media, and relatively poor performance of this information when used on its own, highlights that crowdsourced data currently must be used in combination with traditional flood mapping methods. However, novel additional techniques for identifying relevant social media reports and increasing samples sizes of digital reporting from citizens may relax this requirement (as long as its quality can be assured). The fusion method proposed did not take into account the quality of the information, but the workflow proposed here could integrate a quality assurance step (e.g. such as a probabilistic credibility assessment (Hung et al. 2016)), even if the algorithms used in quality assurance and in data fusion present some entanglement (Leibovici et al. 2015).

7 Conclusions

This paper presented the methodology and experimental results of a rapid flood mapping workflow using social media, remote sensing and topographic map data. Using a Bayesian statistical model based on weights-of-evidence analysis, a data-driven approach was developed which quantifies the contribution of each information source. Combining these sources together enables generation of a probability map denoting likelihood of the presence of floodwater at the pixel level. A case study using data relating to the 2014 UK flood event was completed. ROC assessment and AUROC values demonstrated that the multisource flood mapping method effectively predicts spatial extent of water. Furthermore, the methodology shows that even relatively simple voting-based procedures for controlling for the quality of non-authoritative social media data may be integrated in a flood assessment workflow. In future work, we will investigate the effects of uncertainty within the data, such as positional accuracy of the geotagged photographs and the imprecision of viewing direction, on the predicted flood extent.

Acknowledgements This work was supported by the Advanced Geospatial Information and Intelligence Services (AGIS) project (UK MOD Contract No: DSTLX-1000063699) and the Citizen Observatory WEB (COBWEB) project funded by the European Union under the FP7 ENV.2012.6.5-1 funding scheme, EU Grant Agreement Number: 308513. The authors thank the UK Environment Agency Geomatics team for supplying the ground-truth data for this study.

Open Access This article is distributed under the terms of the Creative Commons Attribution 4.0 International License (<http://creativecommons.org/licenses/by/4.0/>), which permits unrestricted use, distribution, and reproduction in any medium, provided you give appropriate credit to the original author(s) and the source, provide a link to the Creative Commons license, and indicate if changes were made.

References

- Agterberg F, Cheng Q (2002) Conditional independence test for weights-of-evidence modeling. *Nat Resour Res* 11:3–9. doi:[10.1023/A:1021193827501](https://doi.org/10.1023/A:1021193827501)
- Albuquerque JP, Herfort B, Brenning A, Zipf A (2015) A geographic approach for combining social media and authoritative data towards identifying useful information for disaster management. *Int J Geogr Inf Sci*. doi:[10.1080/13658816.2014.996567](https://doi.org/10.1080/13658816.2014.996567)
- Apel H, Aronica GT, Kreibich H, Thieken AH (2009) Flood risk analyses—how detailed do we need to be? *Nat Hazards* 49:79–98. doi:[10.1007/s11069-008-9277-8](https://doi.org/10.1007/s11069-008-9277-8)
- Barrington L, Ghosh S, Greene M et al (2011) Crowdsourcing earthquake damage assessment using remote sensing imagery. *Ann Geophys*. doi:[10.4401/ag-5324](https://doi.org/10.4401/ag-5324)
- Bonham-Carter G (1994) *Geographic information systems for geoscientists: modelling with GIS*. Elsevier, Amsterdam
- Chavez PS Jr (1996) Image-based atmospheric corrections—revisited and improved. *Photogramm Eng Remote Sens* 62:1025–1036
- Devkota KC, Regmi AD, Pourghasemi HR et al (2013) Landslide susceptibility mapping using certainty factor, index of entropy and logistic regression models in GIS and their comparison at Mugling-Narayanghat road section in Nepal Himalaya. *Nat Hazards* 65:135–165. doi:[10.1007/s11069-012-0347-6](https://doi.org/10.1007/s11069-012-0347-6)
- Dickson BG, Prather JW, Xu Y et al (2006) Mapping the probability of large fire occurrence in northern Arizona, USA. *Landsc Ecol* 21:747–761. doi:[10.1007/s10980-005-5475-x](https://doi.org/10.1007/s10980-005-5475-x)
- Environment Agency (2015) LIDAR composite DTM-2m. <https://data.gov.uk/dataset/lidar-composite-dtm-2m1>
- Environment Agency (2015) Oxford and Abingdon: reducing flood risk. <https://www.gov.uk/government/publications/oxford-flood-risk-management-scheme/oxford-and-abingdon-reducing-flood-risk>. Accessed 11 Sep 2015

- GDAL (2016) Homepage of geospatial data abstraction library. <http://www.gdal.org/>. Accessed 11 Aug 2016
- GeoTag-X (2015) GeoTag-X disaster mapping. <http://www.geotagx.org/>. Accessed 22 Sep 2015
- Ghosh S, Huyck CK, Greene M et al (2011) Crowdsourcing for rapid damage assessment: the global earth observation catastrophe assessment network (GEO-CAN). *Earthq Spectra*. doi:10.1193/1.3636416
- Goodchild MF (2007) Citizens as sensors: the world of volunteered geography. *GeoJournal* 69:211–221. doi:10.1007/s10708-007-9111-y
- Goodchild MF, Glennon JA (2010) Crowdsourcing geographic information for disaster response: a research frontier. *Int J Digit Earth*. doi:10.1080/17538941003759255
- Goodchild MF, Li L (2012) Assuring the quality of volunteered geographic information. *Spat Stat* 1:110–120. doi:10.1016/j.spasta.2012.03.002
- Haworth B (2016) Emergency management perspectives on volunteered geographic information: opportunities, challenges and change. *Comput Environ Urban Syst* 57:189–198. doi:10.1016/j.compenurbysys.2016.02.009
- Hung K-C, Kalantari M, Rajabifard A (2016) Methods for assessing the credibility of volunteered geographic information in flood response: a case study in Brisbane, Australia. *Appl Geogr* 68:37–47. doi:10.1016/j.apgeog.2016.01.005
- International Charter (2000) Space and major disasters. <http://www.disasterscharter.org>
- Jiang H, Feng M, Zhu Y et al (2014) An automated method for extracting rivers and lakes from landsat imagery. *Remote Sens* 6:5067–5089. doi:10.3390/rs6065067
- Kerle N, Hoffman RR (2013) Collaborative damage mapping for emergency response: the role of cognitive systems engineering. *Nat Hazards Earth Syst Sci* 13:97–113. doi:10.5194/nhess-13-97-2013
- Le Coz J, Patalano A, Collins D et al (2016) Crowd-sourced data for flood hydrology: feedback from recent citizen science projects in Argentina, France and New Zealand. *J Hydrol* 541:766–777. doi:10.1016/j.jhydrol.2016.07.036
- Leibovici DG, Evans B, Hodges C et al (2015) On data quality assurance and conflation entanglement incrowdsourcing for environmental studies. *ISPRS Ann Photogramm Remote Sens Spat Inf Sci* 1:195–202
- Li W, Du Z, Ling F et al (2013) A comparison of land surface water mapping using the normalized difference water index from TM, ETM+ and ALI. *Remote Sens* 5:5530–5549. doi:10.3390/rs5115530
- Liu L, Liu Y, Wang X et al (2015) Developing an effective 2-D urban flood inundation model for city emergency management based on cellular automata. *Nat Hazards Earth Syst Sci* 15:381–391. doi:10.5194/nhess-15-381-2015
- Macdonald D, Dixon A, Newell A, Hallaways A (2012) Groundwater flooding within an urbanised flood plain. *J Flood Risk Manag* 5:68–80. doi:10.1111/j.1753-318X.2011.01127.x
- Mason DC, Speck R, Devereux B et al (2010) Flood detection in urban areas using TerraSAR-X. *IEEE Trans Geosci Remote Sens* 48:882–894. doi:10.1109/TGRS.2009.2029236
- Matgen P, Hostache R, Schumann G et al (2011) Towards an automated SAR-based flood monitoring system: lessons learned from two case studies. *Phys Chem Earth Parts A/B/C* 36:241–252. doi:10.1016/j.pce.2010.12.009
- McFeeters SK (1996) The use of the Normalized Difference Water Index (NDWI) in the delineation of open water features. *Int J Remote Sens* 17:1425–1432. doi:10.1080/01431169608948714
- OCC (2011) Oxford City council strategic flood risk assessment for Oxford City. https://www.oxford.gov.uk/download/downloads/id/1503/strategic_flood_risk_assessment_level_1_-_main_report.pdf
- Oh HJ, Lee S (2010) Assessment of ground subsidence using GIS and the weights-of-evidence model. *Eng Geol* 115:36–48. doi:10.1016/j.enggeo.2010.06.015
- Otsu N (1979) A threshold selection method from gray-level histograms. *Syst Man Cybern IEEE Trans* 9:62–66. doi:10.1109/TSMC.1979.4310076
- Panteras G, Wise S, Lu X et al (2014) Triangulating social multimedia content for event localization using Flickr and Twitter. *Trans GIS* 19:694–715. doi:10.1111/tgis.12122
- Pierdicca N, Chini M, Pulvirenti L, Macina F (2008) Integrating physical and topographic information into a fuzzy scheme to map flooded area by SAR. *Sensors* 8:4151–4164. doi:10.3390/s8074151
- Poser K, Dransch D (2010) Volunteered geographic information for disaster management with application to rapid flood damage estimation. *Geomatica* 64:89–98
- Poser K, Kreibich H, Dransch D (2009) Assessing volunteered geographic information for rapid flood damage estimation. In: 12th AGILE international conference on geographic information science, pp 1–9
- Pradhan B, Oh H-J, Buchroithner M (2010) Weights-of-evidence model applied to landslide susceptibility mapping in a tropical hilly area. *Geomat Nat Hazards Risk* 1:199–223. doi:10.1080/19475705.2010.498151

- Regmi NR, Giardino JR, Vitek JD (2010) Modeling susceptibility to landslides using the weight of evidence approach: western Colorado, USA. *Geomorphology* 115:172–187. doi:[10.1016/j.geomorph.2009.10.002](https://doi.org/10.1016/j.geomorph.2009.10.002)
- Schnebele E, Cervone G (2013) Improving remote sensing flood assessment using volunteered geographical data. *Nat Hazards Earth Syst Sci* 13:669–677. doi:[10.5194/nhess-13-669-2013](https://doi.org/10.5194/nhess-13-669-2013)
- Schnebele E, Cervone G, Kumar S, Waters N (2014a) Real time estimation of the calgary floods using limited remote sensing data. *Water* 6:381–398. doi:[10.3390/w6020381](https://doi.org/10.3390/w6020381)
- Schnebele E, Cervone G, Waters N (2014b) Road assessment after flood events using non-authoritative data. *Nat Hazards Earth Syst Sci* 14:1007–1015. doi:[10.5194/nhess-14-1007-2014](https://doi.org/10.5194/nhess-14-1007-2014)
- Schumann GJP, Vernieuwe H, De Baets B, Verhoest NEC (2013) ROC-based calibration of flood inundation models. *Hydrol Process* 5502:5495–5502. doi:[10.1002/hyp.10019](https://doi.org/10.1002/hyp.10019)
- Sing T, Sander O, Beerenwinkel N, Lengauer T (2005) ROCr: visualizing classifier performance in R. *Bioinformatics* 21:3940–3941
- Slingo J, Belcher S, Scaife A et al (2014) The recent storms and floods in the UK. http://www.metoffice.gov.uk/media/pdf/1/2/Recent_Storms_Briefing_Final_SLR_20140211.pdf
- Smith L, Liang Q, James P, Lin W (2015) Assessing the utility of social media as a data source for flood risk management using a real-time modelling framework. *J Flood Risk Manag*. doi:[10.1111/jfr3.12154](https://doi.org/10.1111/jfr3.12154)
- Sterlacchini S, Ballabio C, Blahut J et al (2011) Spatial agreement of predicted patterns in landslide susceptibility maps. *Geomorphology* 125:51–61. doi:[10.1016/j.geomorph.2010.09.004](https://doi.org/10.1016/j.geomorph.2010.09.004)
- Tehrany MS, Lee M-J, Pradhan B et al (2014a) Flood susceptibility mapping using integrated bivariate and multivariate statistical models. *Environ Earth Sci* 72:4001–4015. doi:[10.1007/s12665-014-3289-3](https://doi.org/10.1007/s12665-014-3289-3)
- Tehrany MS, Pradhan B, Jebur MN (2014b) Flood susceptibility mapping using a novel ensemble weights-of-evidence and support vector machine models in GIS. *J Hydrol* 512:332–343. doi:[10.1016/j.jhydrol.2014.03.008](https://doi.org/10.1016/j.jhydrol.2014.03.008)
- Thorne C (2014) Geographies of UK flooding in 2013/4. *Geogr J* 180:297–309. doi:[10.1111/geoj.12122](https://doi.org/10.1111/geoj.12122)
- Wheatley D (1995) Cumulative viewshed analysis: a GIS-based method for investigating intervisibility, and its archaeological application. In: Lock G, Stančić Z (eds) *Archaeology and geographic information systems: a european perspective*. Taylor & Francis, London, pp 171–185
- Xiao Y, Huang Q, Wu K (2015) Understanding social media data for disaster management. *Nat Hazards* 79:1663–1679. doi:[10.1007/s11069-015-1918-0](https://doi.org/10.1007/s11069-015-1918-0)
- Xu H (2006) Modification of normalised difference water index (NDWI) to enhance open water features in remotely sensed imagery. *Int J Remote Sens* 27:3025–3033. doi:[10.1080/01431160600589179](https://doi.org/10.1080/01431160600589179)
- Zook M, Graham M, Shelton T, Gorman S (2010) Volunteered geographic information and crowdsourcing disaster relief: a case study of the Haitian earthquake. *World Med Heal Policy* 2:6–32. doi:[10.2202/1948-4682.1069](https://doi.org/10.2202/1948-4682.1069)